

Security system for Mobile phone (Android USB 5pin)

6 Ports with a remote control
INSTALLATION MANUAL

(MODEL : PT6)

Security system for Mobile phone (Android USB 5pin)



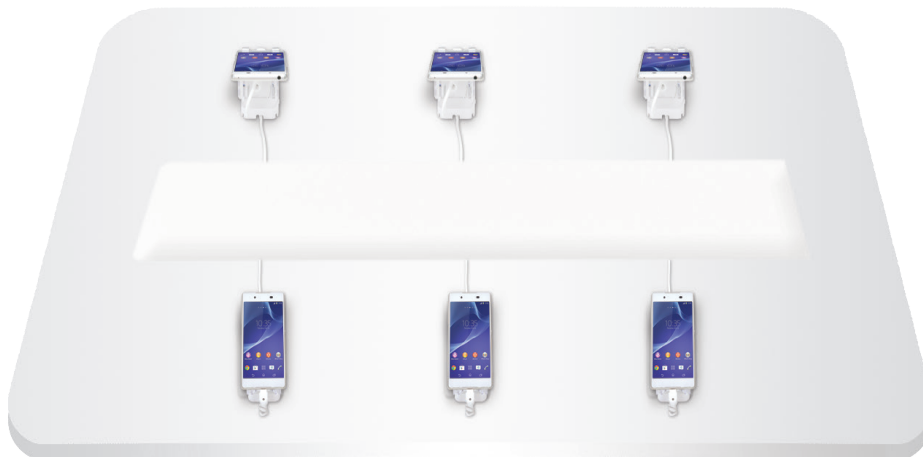
Contents

INTRODUCTION	2	Introduction
SAFTY INFORMATION	3	Safety information
	4	Important safety instruction
BEFORE INSTALLATION	5	Checking the parts
	6	Details of the control box
	7	Details of the remote control
INSTALLATION	8	Overview of installation procedure
	9	Step 1. Mounting the IR sensor
	10	Step 2. Assembling & Mounting the cradle
		A Assembling the cradle
		B Mounting the cradle
		C Adjustig for the degree of cradle
	11	Step 3. Connecting the charging & security cable Mobile phone
	12	Step 4. Installing the control box
	13	Step 5. Turn on the controlbox
	14	Step 6. Testing the sensor connection
LIMITED WARRANTY & Packaging information	15	Charging & Security system
CONTACT INFORMATION	16	Manufacturer Information

Introduction

KEY FEATURES

- * This security system kit contains all the materials needed to build an anti-theft/anti-lost system for a product displayed in an exhibition or retail store.
- * The security system prevents a product from being lost or stolen with alarming sounds when it is separated from the security sensor or when the security cable is cut-off.
- * An administrator can turn off the alarming sound conveniently with the remote control of the security system kit
- * The security system performs battery-charging and security function at the same time, hence it can produce a stable and aesthetic exhibition environment.



Safety Warnings



Safety Warnings: Prohibited activities to prevent electric shock, short circuit, fire, explosion and injury.

The below are provisions to maintain safety of the user and prevent damage to property. Please read the provisions thoroughly and properly use the product.

Warning: The user may be injured or property may be damaged for failure to comply with the provisions.

- Please only use the AC power adapter specified by the manufacturer!
 - There is a danger of short circuit and fire.
- Do not spill water or liquid on the product or install in places with water or high humidity!
 - There is a danger of short circuit and fire.
 - Do not connect to the power supply in a wet condition (if connected, pluck out the power plug), remove the moisture with a dry towel.
- Never disassemble, repair, or remodel the product!
 - There is a danger of fire and injury.
- Do not pluck out or touch the power plug and charger/sensor cable line with moist hands!
 - There is a danger of electric shock, short circuit, and fire.
- Do not use a damaged power cable or plug, damaged charger/sensor cable, or loose outlet!
 - There is a danger of electric shock, short circuit, and fire.
- Do not destroy the AC power cable and charging and security cable by forcefully bending it or by pressing it with a heavy object!
 - There is a danger of electric shock, short circuit, and fire.
- Pluck out the power plug immediately if an unusual sound, smell, or smoke is detected, excluding the buzzer sound from the product!
 - There is a danger of electric shock, short circuit, and fire.
- Do not touch the power plug, charging and security cable in the event of lightning and thunder!
 - There is a danger of electric shock.
- Do not wind the AC power cable, charging and security cable around your neck or body!
 - There is a danger of death or serious injury.
- Do not expose the product to fire or other electric heaters!
 - There is a danger of fire or damage to the product.
- Do not forcefully bend or pull the cable!
 - There is a danger of damage to the product or injury to the user.
- When the cable is disconnected or breaks away, don not touch the cable bare hands, but always wear protective hand gloves!

Important Safety Instructions



The below are provisions to maintain safety of the user and prevent damage to property. Please read the provisions thoroughly and use the product properly.

Warning: Failure to comply with the provisions may result in injury to the user or damage to property.

- Do not install in places with water or high humidity!
 - There is a danger of short circuit and fire.
- Do not install in unstable or shaky places!
 - The equipment falling may cause injury.
 - Call the service center if the equipment is damaged due to a fall.
- Do not install in places with high temperature fluctuations!
 - Dew formation on the equipment may become the cause of electric shock or fire.
- Do not install in places exposed to direct light or where ventilation is poor!
 - Overheating of the equipment or components or malfunctioning may cause fire.
- Do not put the product in or near a heater, microwave, oven, or high-pressure vessels!
 - It can become a cause of deformation, destruction, or fire.
- Do not drop the product or inflict outside stimulation!
 - There is a danger of incurring damage.
 - Damage or malfunction may occur if the product is bent or twisted.
- Only the consumables or special editions such as cradle or charging and security cables designated by the manufacturer must be used!
 - Otherwise, the life of the security alarm device may shorten or the product may malfunction.
 - It may not be safe for the user to use a consumable or special editions not authorized by the manufacturer.
- Do not stab a security alarm device or basic component in your body, such as eyes or ears, and do not put it in your mouth!
 - There is a danger of suffocation or incurring serious injury to your body.
- Always use and keep the product in clean places!
 - A large amount of dust may become the cause of malfunctioning of the security alarm device.

The specifications and design of the product may be modified without prior notice for the improvement of product performance.

Before Installation

CHECKING THE PARTS

Carefully unpack the packaging and make sure you've received all the parts. Cradle and Charging & Security Cables are optional. So, depending on your order, the number of them can not be the same as described below.



- Plug gender will be enclosed in the package as correct shape of each country is being used
- The design of remote controller is subject to change

• There are two types as below.



• These two types can be purchased optionally according to the request of the buyer.

Elective items are changeable upon the request of the buyer

A-1



Charging & security cable (6EA)
Length : 1,300 ±30MM



Auxiliary paper: 2EA Adhension tape : 1EA

B-1

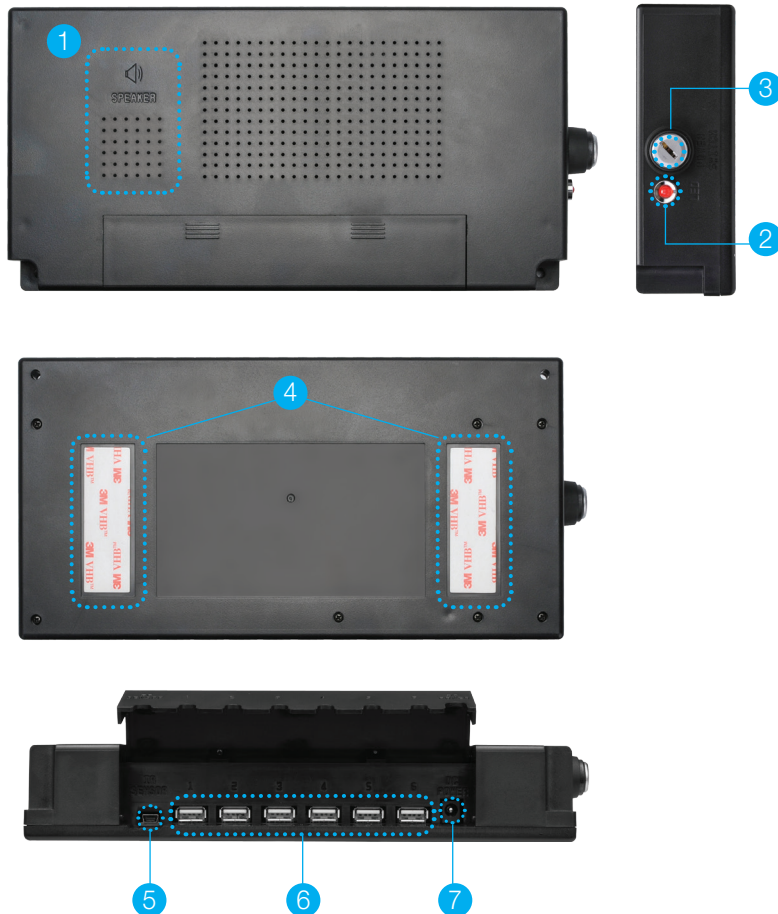


Cradle assy. set (6Set)

- Cradle (6EA)
- Bottom lid (6EA)
- 3x8mm Screw (4EA)

Before Installation

DETAILS OF THE CONTROL BOX



- 1 Speaker**
Sound the alarm when something wrong happens on the security system.
- 2 LED lamp**
When the power switch is on, red light turns on and DC power is supplied.
- 3 Power ON/OFF Key**
Turn the key to the "ON" direction
- 4 Area for double-sided tape**
Attach double-sided tape for mounting the control box
- 5 Mini USB port**
Plug-in the Mini USB connector of the IR sensor
- 6 USB ports**
Plug-in the USB connectors of the charging & security cable
- 7 Power-in port**
Plug-in the power tip of the AC adaptor

Before Installation

DETAILS OF THE REMOTE CONTROL



1 Protective film

To operate the remote control, peel off the Protective film

2 LED indicator

To turn off the alarm through the remote control, when the alarm off button is pushed, LED indicator is twinkling

3 Alarm off button

Turn off the alarm sound of the control box

CAUTION

RISK OF EXPLOSION IF BATTERY IS REPLACED
BY AN INCORRECT TYPE.
DASPOSE OF USED BATTERIES ACCORDING
TO THE INSTRUCTIONS

Installation

OVERVIEW OF INSTALLATION PROCEDURE

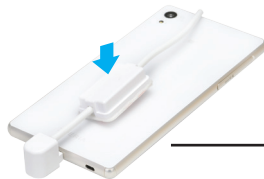
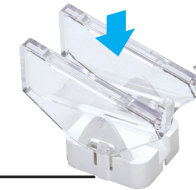


Step 1.

Mounting the IR sensor

Step 2.

Assembling & mounting the cradle & Adjusting degree of cradle

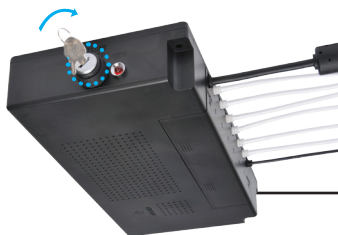


Step 3.

Connecting the charging & security cable

Step 4.

Installing the control box



Step 5.

Turn on the control box

Step 6.

Testing the sensor connection



FINISH

Installation

Step 1. MOUNTING THE IR SENSOR



- 1 Determine where the IR sensor will be mounted on the table, and clean the determined surface thoroughly with a glass cleaner and a clean towel.



- 2 Peel off the protection film of the adhesive tape.



- 3 Press it firmly for the sensor to be mounted on the table.



- 4 Please do not hinder the IR sensor so that it can receive the signal from the remote control.

Installation

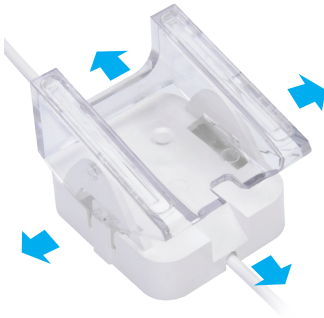
Step 2. ASSEMBLING THE CRADLE



- To perform the work easily, Place the bottom of cradle facing up wards.
- Charging & Security cable is placed on the middle of the cradle, and push the charging & security cable along the furrow
- After finishing all the installing processes described above, close the bottom lid and fasten the screws.

Installation

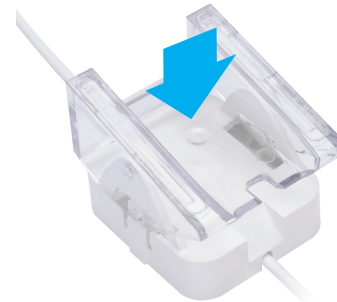
Step 2. MOUNTING THE CRADLE- for MOBILE PHONE



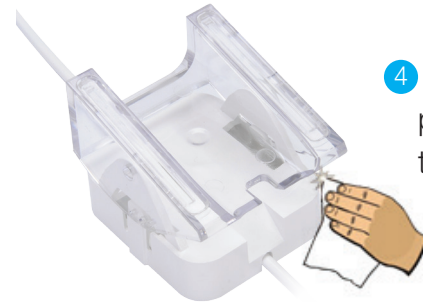
- 1 Determine where the cradle will be mounted on the table, and clean the determined surface thoroughly with a glass cleaner and a clean towel.



- 2 Peel off all the protection films of the adhesive tapes underneath the cradle.



- 3 Press it firmly for the cradle to be mounted on the table.



- 4 Please wipe off dirt and finger prints for the best looking of the transparent material.



option1



option2

Installation

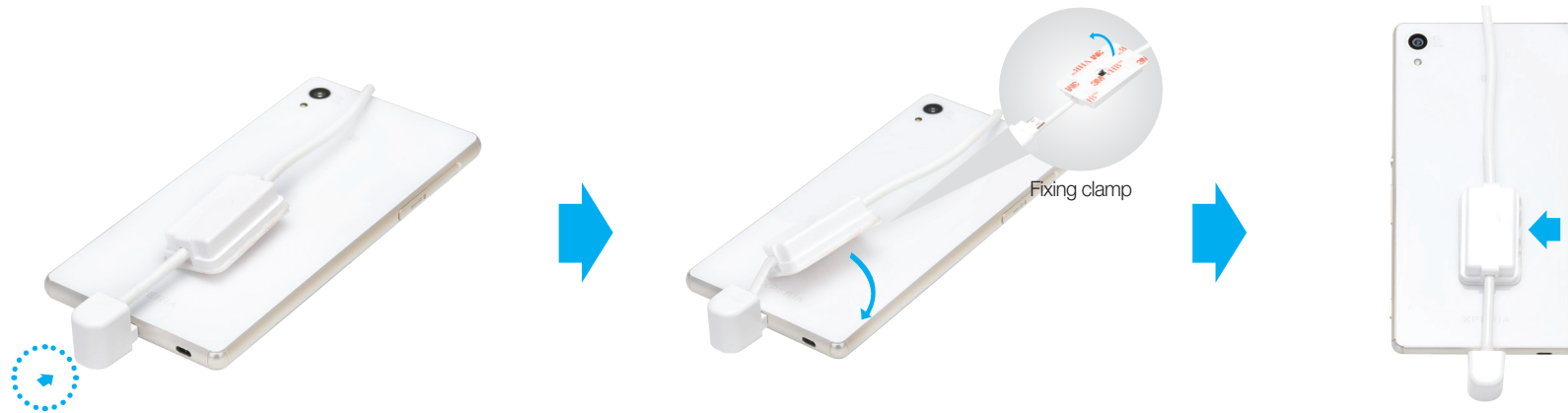
Step 2. ADJUSTING for THE DEGREE OF CRADLE



Cradle adjust to the that is the angle most comfortable for you

Installation

Step 3. CONNECTING THE CHARGING & SECURITY CABLE - for MOBILE PHONE



Plug the charging & security connector into the charging port of a mobile phone.

※Position of charging port may vary depending on type of mobile phone.

Peel off the protection film of the adhesive tape of the Fixing clamp.

And then, press it firmly for the Fixing clamp to be mounted on the top position.

※Adhesion of double sided tapes used for Fixing clamp attachment may vary depending on materials of adhesion side and bend of surface and adjacent temperature. Considering the nature of double sided tapes, normal level of adhesion can be achieved at least 24 hours after adhesion

After Fixing clamp is mounted, finish the job for connecting the charging & security cable to the mobile phone.

Installation

Step 4. INSTALLING THE CONTROL BOX



After Fixing clamp is mounted, finish the job for connecting the charging & security cable to the mobile phone.

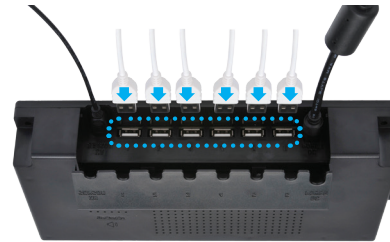
And then, Lock the control box on the determined location with two screws (4.5mmx12mm, You need to prepare a “+” screw driver).



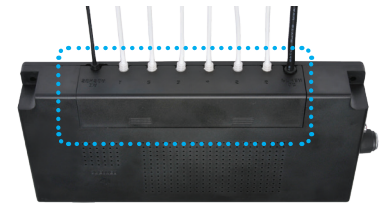
Plug the power tip of the AC adapter into the power-in port of the control box, and plug the power cable into an AC outlet.



Plug the mini USB connector of the IR sensor into the mini USB port of the control box.



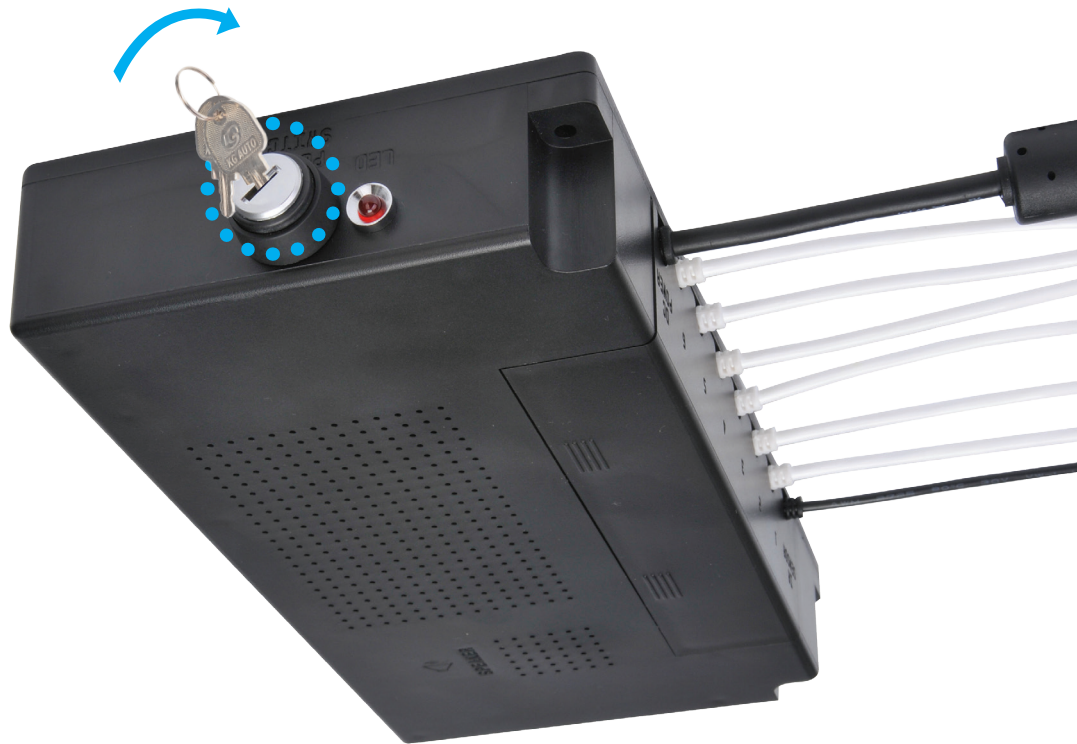
Plug the USB connectors of the charging & security cables into the USB ports of the control box. (Up to 6 cables can be connected at once.)



Close the lid and finish the installation

Installation

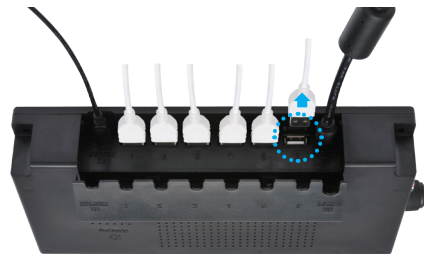
Step 5. TURN ON THE CONTROL BOX



Turn the key to the "ON" direction, and check the LED light on

Installation

Step 6. TESTING THE SENSOR CONNECTION



For testing sensor connection, please unplug one of the USB connectors of the charging & security cables from the USB ports.

If it rings the alarm sound, the connection is successful.



Beep...Beep

Beep...Beep

Otherwise, please check the connection, and rework the chapter, "CONNECTING THE CHARGING & SECURITY CABLE" of this installation instructions.(refer to page 11)



Push turn off button of the remote control for turning off Alarm

Limited Warranty & Packaging information

Charging & Security System

Components	Item	Period
	Controller	Warranty period for one year
	AC adaptor	Warranty period for one year
	Cradle	One year for cradle / 8 months for silicon
	Charging & security cable	Warranty period for 8 months
	Remote control	Warranty period for one year
	IR sensor	Warranty period for one year

* In case of user's fault during the warranty period it is not free of charge.

Packaging information



[Inner box]



[Carton box]



Measurement : Length X Width X Height (mm)
(310 X 325 X 108)
Weight per box : 2,969g



Measurement : Length X Width X Height (mm)
(570 X 320 X 360)
Weight per box : 15,910g (Include 5 inner boxes)

Contact Information

Manufacturer Information

PROTECH Co.,Ltd

48, Sosam-ro, Sosa-gu, Bucheon-si Gyeonggi-do, (Seoul 422-233 Korea)

Tel : +82-32-341-8985 **Fax :** +82-32-341-8986 **E-mail :** b2solier@naver.com